

Arrowbear Music Camp

Advanced Session!

July 5 - 25, 2026



Pre Camp Checklist

- June 20th- Sample Recording Due
- June 22nd- Balance, Health Form, and Medication form must be completed
- Medications properly labeled and ready to turn in
- Packing list double checked
- Keep an eye out for an email from our music staff with music to print
- Get ready to have an amazing session!!!

Packet Contents:

Arrival & Departure Information

Address & Driving Directions

Tuition Balance

Medical Form & Medications

Audition Video

General Camp Information-

- Mail
- Email
- Cell phones
- Online camp photo album
- Camp group photo and roster
- Housing
- Laundry
- Visitors
- Camp store

Packing List

Information

at a glance:

- Camp office phone: 909-867-2782
- Larke's cell phone: 562-225-7766 (ok to text)
- June 22nd: session balance and health form must be finalized
- July 5th: arrival day check in 1:45pm-3:45pm. Your assigned arrival time can be found in the email accompanying this packet.
- July 25th: Pick up day- 5pm concert
- Camp's physical address 33500 Music Camp Rd., Arrowbear lk, CA 92382
- Camp's mailing address: PO Box 180, Running Springs, CA 92382

Arrival and Departure Information



First Day of Camp– July 5th

Check-in will take place between 1 PM and 3:45 PM.

Your assigned arrival time can be found in the email accompanying this packet. Please refer to it to help us keep the check-in process running smoothly.

When you arrive, head to the camp porch check-in station.

Here's what to expect:

Sign In:

- Make a name tag, have your picture taken, turn in snack bar cash (if any), and pay any remaining balance

Medical Check-In:

- Screening, temp check, and medication drop-off with the Health Supervisor.

Last Day of Camp– June 25th

Closing concert 5:00 PM.

Concert details will be emailed out in the next 7 days. Last year we had the concert at the local high school to accommodate 89 campers. This year we expect about 70 campers so may have the concert at camp. Stay tuned for details!

Carpool

If you are interested in carpooling, please let us know and we will email your name, contact info, and location to everyone on our Advanced Session roster.



Address and Driving Directions to Camp

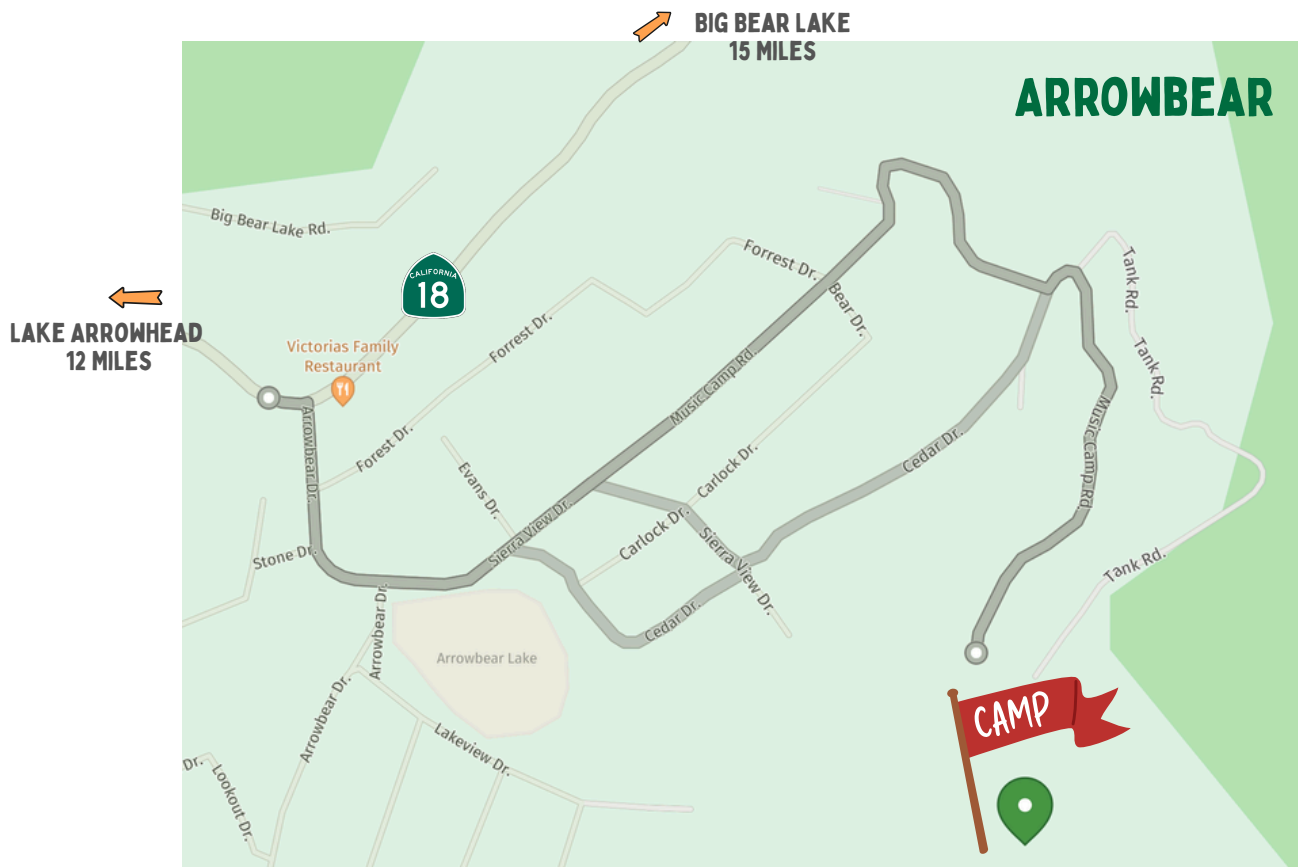
Physical address: 33500 Music Camp Rd, Arrowbear Lk, CA 92382

First Time Visiting?

If you haven't been to camp before, please bring a copy or screenshot of the directions - we recommend not relying solely on GPS, as the directions can be inaccurate the last ½ mile

Driving Directions

- From **I-210 in Highland**, take **Highway 330** toward Big Bear
- Drive up the mountain and continue **through Running Springs** and **Arrowbear**
- Turn **right at the second Arrowbear Drive** (look for Victoria's Family Restaurant on the corner).
If you see signs for Green Valley Lake or Snow Valley Ski Resort, you've gone too far
- Stay **to the left of the small pond** (may be dry in June)
- **Continue up Music Camp Road** (or alternatively, right at Sierra View → left at Cedar Drive, sharp right at Music Camp Road)
Careful to avoid a wrong turn on Tank Road- it is very steep and narrow
- You will know you have made it when you reach the large **green and brown "Arrowbear Music Camp" sign**. 😊
- Follow signs to the check-in station upon arrival.



Tuition Balance

Payment due in full by June 22nd. If you received a scholarship from an organization other than Arrowbear Associates, please make sure details have been sent to the camp.

Medical Form & Medications

Please make sure your online medical form is completed and up to date by June 22nd. You can access the form directly from your parent login:

[Medical Form Link](#)

Find it anytime in the Document Center after logging in to the Parent Portal.

Our Camp Health Supervisor will review the form with you during check-in.

All medications, including over-the-counter items, **must be turned in at check-in**. This is required by law and is essential for camper safety.

- Medications **must be in their original, labeled containers**.
- If using a daily pill organizer, you **must also bring the original prescription bottle for reference**.
- Unlabeled or loose medications will not be accepted or administered.

Audition Video

The music staff are preparing for camp. In order for them to create optimum seating for the ensembles and select appropriate repertoire, please complete the form at the following link, which includes submitting a brief video of no more than 60 seconds in length, featuring what you feel is your best playing. (Percussionists, we realize you may not have access to your instrument of choice, if this is so you may comment on that in your video, then please submit the most appropriate sample that you can.)

- Please submit by June 20
- If you run into issues, contact ross.durand@gmail.com
- Submit here: <https://forms.gle/y2cpenDdHBPiihu76>



General Camp Information:

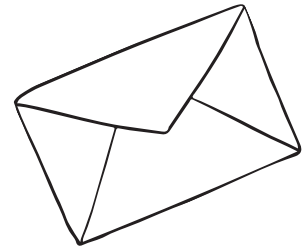
Communication with campers–

Old fashioned snail mail

Campers love receiving mail during their time at camp!
You can send letters to:

Camper's Name

c/o Arrowbear Music Camp
P.O. Box 180
Running Springs, CA 92382



Note: Any mail that arrives after the session ends will be forwarded to the camper's home address.

Want to plan ahead?

Family and friends are also welcome to drop off letters or small packages at the camp office to be delivered on a specific day. You will see a drop off "Camper Mail" box sitting near the check in table. Please label them clearly with the camper's name and preferred delivery date.

Emailing your camper

You can send one-way emails to your camper through your online account.
Here's how:

- Log in to the [Parent Portal](#)
- From the left-hand menu, select "Message Center"
- Click "email a camper"

Emails are printed and delivered to camper mailboxes along with the daily mail.

Note: Campers do not have access to respond to emails while at camp.

Cell Phones

Campers are welcome to bring a cell phone to camp if need. We ask that usage for calls, texts, etc. is kept discrete. Alternatively, campers may keep their phone locked in the camp office for use at any time.

Daily Camp Photos:

We'll be posting daily photos to your online account starting Monday evening.

Check back daily for new photos.

To view:

1. Log in to the [Parent Portal](#)
2. Select "Photo Gallery" from the left-hand menu

You can also follow along with camp life on social media:

[instagram.com/arrowbearmusiccamp](https://www.instagram.com/arrowbearmusiccamp)

[facebook.com/ArrowbearMusicCamp](https://www.facebook.com/ArrowbearMusicCamp)

(Links are also available on our website)

Commemorative Photo and Camp Roster (the 'note'):

At the end of the session, each camper will receive a group photo and a roster with contact information for fellow campers and staff. A great way to stay in touch after camp!

Campers can choose what information they'd like to include. The roster typically includes:

- Instrument
- City
- Phone number
- Social media handle(s)

If you'd prefer that any of your camper's information not be shared, please let us know during check-in or anytime during the 1st 2 days of camp.



Housing

Housing at camp is barrack-style. Most campers live out of their suitcase or backpack during their stay. However, we do provide footlocker trunks and a limited number of cubbies throughout the dorm for additional storage.

Laundry

For our three-week session, we know campers will need to do laundry during their stay. We have a simple setup on site with a cold-water washing machines, unscented laundry pods, and a clotheslines in each sleeping areas for drying. We will organize a laundry use.

Visitors

For the safety and privacy of all campers, please contact the camp office in advance if you plan to visit during the session.

Arrowbear Store:

During free time, campers can visit our camp store, which offers a small selection of snacks and Arrowbear gear.

How It Works:

Campers use a store debit account—no cash is kept on hand. Any unused funds will be returned in cash on the last day of camp.

To add funds:

- Log into the [Parent Portal](#)
- from the left-hand menu select “Camp Store” → “Store Deposits”
- We also accept cash, check, money order (made out to Arrowbear Music Camp), or credit card online

During the session, your camper’s account will be updated daily with a current total.

Suggested Amount for a 3 Week Session: \$30-\$200

Sample Prices:

- Snacks/Soda: \$1-\$5
- T-shirts: \$20
- Sweatshirts: \$30-\$40
- Other Camp Gear: \$3-\$35

Concert Day:

The camp store will also be open before and after the final concert. Credit cards will be accepted at this time.

Advanced Session Packing List

Clothing

Enough comfortable outdoor clothing for 1 ½ weeks. (we have a cold water washers, detergent pods, and drying racks)

- Jeans/ long pants
- Shorts
- T-shirts/ tank tops
- Sweat shirt/ sweater
- Pajamas
- Socks
- Underwear
- Closed-toe shoes (hiking boots/ tennis shoes)
- Bag or collapsible hamper to hold dirty clothing
- Concert clothes: slacks, khakis or skirts; blouse, polo, or other collared shirt

Bedding

- Warm Sleeping Bag- temps may drop below the 40's- please pack accordingly
- Pillow
- Fitted sheet (to cover vinyl mattress 72"x30")

Toiletries

- Towel and washcloth for shower
- Shower sandals (flip flops)
- Toothbrush, toothpaste, and floss
- Shampoo/conditioner and soap
- Sunscreen and chapstick
- Bug repellent
- Any other personal items you may need

Music Related

- Instrument
- Instrument specific items- strings, reeds, mute, etc.
- Pencils and eraser
- If you plan on performing in our Musicale (recital) or Coconut Bear (talent show) bring any music you may need, including accompaniment
- Any additional instruments you play that you may like to use for free time or optional performance time

Misc.

- Reusable water bottle or buy one with our logo at camp store
- Flashlight or headlamp (with redlight for use on night hikes)

Optional items

- Blankets
- Swimsuit
- Pool towel
- Hat
- Sunglasses
- Hiking boots/ hiking gear
- Sandals
- Snack food in a labeled sealed plastic container
- Stamps and envelopes
- White clothing/fabric for tie-dying
- Black clothing/fabric for bleach dye
- Camera
- Books/ magazines
- Drawing supplies
- Headphones/music player